



# The Kerry 351

The Kerry is a very large home, featuring an unmistakable feeling of opulence. It comes complete with four large bedrooms, large separate dining, games, family, and media room areas. You'll never run out of space!

With its two verandahs and front porch, this home provides deep shade for the main living areas. Featuring a vegetable garden near the kitchen and more than ample storage, this home is designed to make large families feel at home.

Every area of this home has been meticulously planned for energy efficiency, and as our flagship display home in Muirhead it's open for inspection every weekend. Come and experience the Killarney difference for yourself.

## At a glance

Living area	198m <sup>2</sup>
Verandahs	62m <sup>2</sup>
Garage	34m <sup>2</sup>
Width	13.7m
Length	23.6m

Suited to blocks with 17m or greater frontage.

We build your Kerry home from

## \$629,600

Suburbs this home has been built in:  
**Lyons, Muirhead, Durack**

Audited Energy Rating



## With Killarney Homes, you'll get:

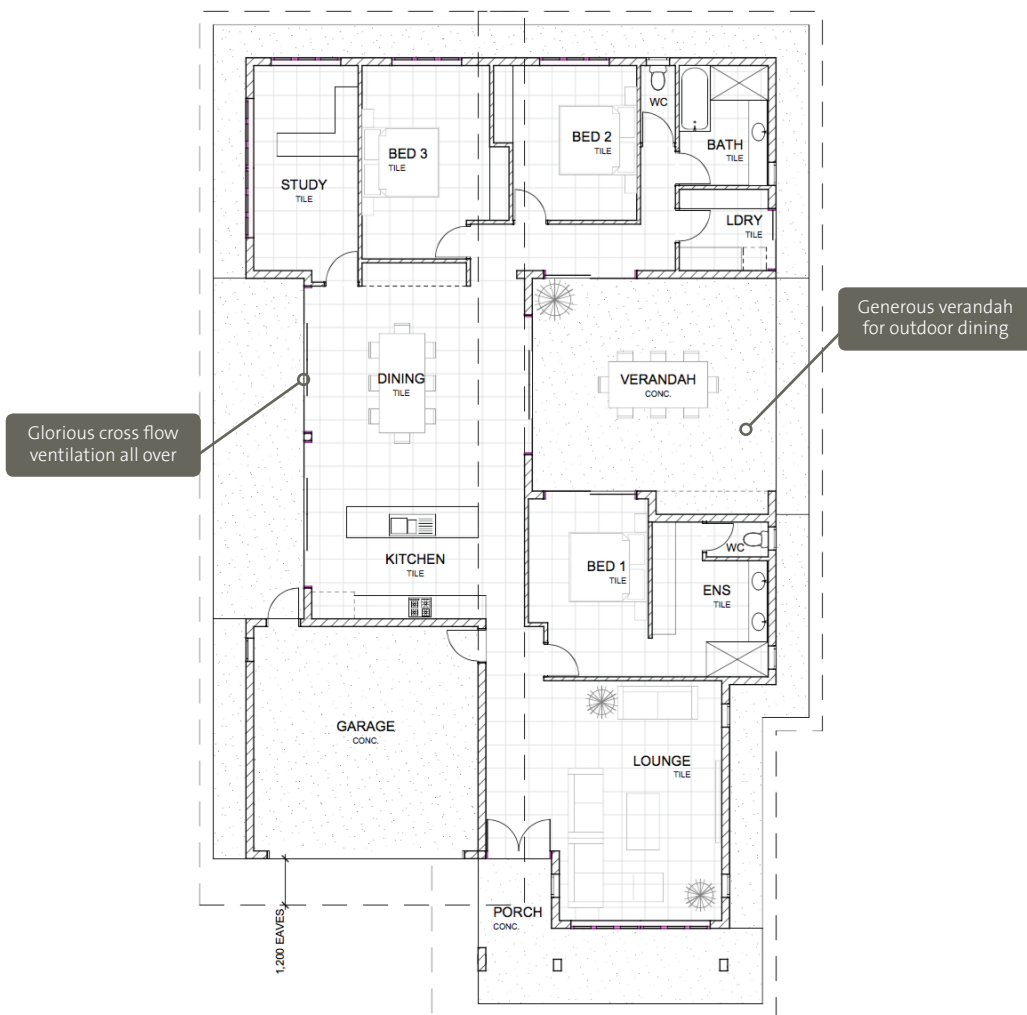
- Maximum energy efficiency, with 6-Star minimum energy ratings
- 600mm tiles throughout the home, standard
- Stone benchtops in kitchen and bathroom
- Stainless steel security screens and grey glass to windows, standard
- Good provision of windows for natural light and airflow
- Full Colourbond 25 degree roof, to keep your home cool all year round
- Fujitsu Inverter air-conditioning throughout
- Solahart solar hot water system
- Solar Power ready for install
- Double carport (or garage, depending on your final design)
- 2700mm high ceilings
- Exposed aggregate outdoors throughout
- Energy saving downlights throughout
- Outstanding quality materials and finishes
- Award-winning kitchen and bathroom designers to create your personal design
- Your choice of ovens and cooktops from a massive range
- Modern bathroom fittings
- Your own personal Design Consultant to create your home with your choice of colours, paint, laminates, tiles, and much more!
- 12-month KillarneyCare post-construction package, standard

[killarneyhomes.com.au](http://killarneyhomes.com.au)



# The Kerry 351

## Ground floor plan



### About Killarney Homes

At Killarney Homes, we're all about building your future with the best in beautiful, energy efficient homes for the tropics.

Our success as one of the Territory's highest-profile and most-respected building companies lies in our clear communication, efficient processes, and high quality, energy efficient housing that meets and exceeds the needs of our customers. Recently, this success culminated in us winning the 2014 Telstra Business Awards in the

Northern Territory Medium Business category. We're also proud to be on the board of the Northern Territory Master Builders Association and have won 80+ awards, including numerous HIA and GreenSmart accolades, cementing our reputation as the leader in sustainable Top End construction.

If you're ready to build your future with a beautiful, energy efficient home designed especially for the tropics, you're in the right place.

Contact us today



sales@killarneyhomes.com.au  
PO Box 39947  
Winnellie NT 0821



killarneyhomes.com.au (08) 8931 2122