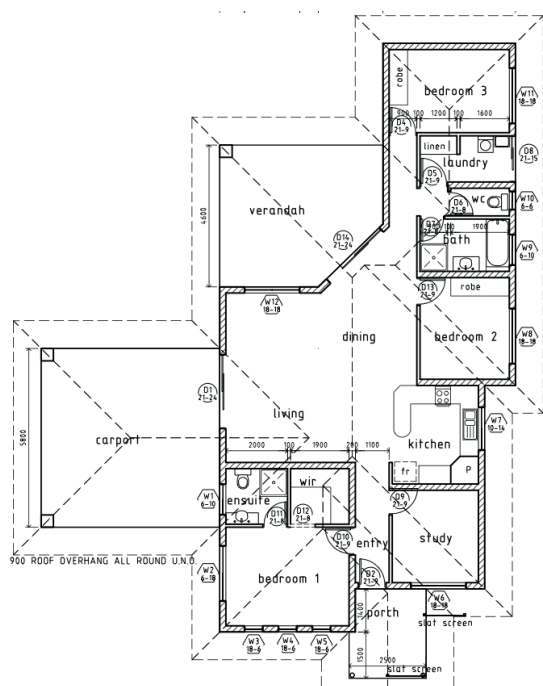


THE WATERFORD II

\$369,520
COMPLETE



KILARNEY
HOMES



GROUND FLOOR PLAN

AT A GLANCE

Living Area: **130m²**
Verandah: **25m²**
Carport: **40m²**
Width: **14.7m**
Length: **17.2m**

Audited Energy Rating:



Suburbs this home has been built in: **Rosebery, Gunn, Farrar, Johnston, Bellamack**

Suited to blocks with **17m or greater frontage**

ABOUT THE WATERFORD 4

Great value four bedroom home

The Waterford 4 is a great entry level 4 bedroom home. This house has been designed to balance economy whilst still maintaining a spacious family home.

A double carport, good size verandah and balanced aspect leaves the home with good street appeal and is a very popular, very livable home.

The 2nd bedroom is well positioned to be used alternatively as a large study, with the living areas separate from the bedrooms.

This home won its category in the 2008 HIA Housing Awards and the 2009 Master Builders Awards.

WHAT YOU EXPECT, YOU GET.

- **Award winning bathroom and kitchen designers** to create your personal design
- **Energy Rating - Five Star minimum Energy Ratings**
- **Fujitsu Inverter Air-conditioning Throughout**
- **Solahart Solar Hot Water System**
- **Rendered** inside and out
- **Good provision of windows for natural light and airflow**
- **Home all under full Colourbond 25 degree roof**, keeping it cool
- **Double Carport (or Garage, depending on final design)**
- **2700mm High Ceilings**
- **Tiled floor coverings throughout**
- **Energy saving downlights** throughout
- **Outstanding quality in finishes**
- **Your choice of ovens and cooktops** from a massive range
- **Work with in-house designers** to create your home with your choice of colours, paint, laminates, tiles and much more!
- **Quality Bathroom Fittings**
- **Full outdoor concrete**
- **Comprehensive fencing package** supplied
- **Comprehensive Landscaping package** supplied



ABOUT KILLARNEY HOMES

12-time HIA and Master Builders National Finalists 2009-2012.

With a focus on Energy Efficient Design, Killarney Homes leads the way for tropical homes in the Top End. In the last three years alone, we have been awarded for excellence across many categories we have a wide ranging portfolio of homes, townhouses and renovations. We offer simple, clear, complete home prices, something our customers come to expect. CAL Accredited for projects up to 10 Million dollars, you can count on Killarney Homes to build your dream home.



WWW.KILLARNEYHOMES.COM.AU
(08) 89 312 122