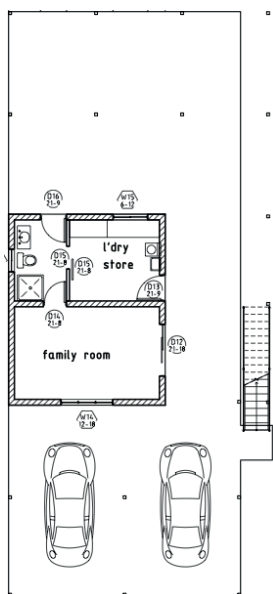


# THE MAYO 5

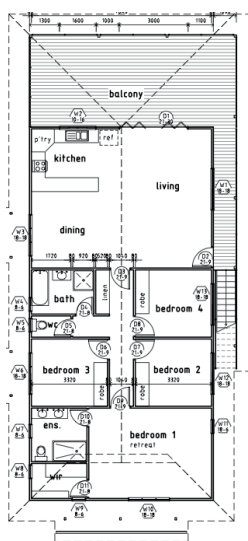
\$559,555  
COMPLETE



KILLARNEY  
HOMES



GROUND FLOOR PLAN



1ST FLOOR PLAN

## AT A GLANCE

Living Area 1st Floor: **189m<sup>2</sup>**  
Living Area Ground: **56m<sup>2</sup>**  
Verandah and Outdoor: **133m<sup>2</sup>**  
Width: **15.3m**  
Length: **16.6m**

Audited Energy Rating:



Suburbs this home has been built in: **Durack, Lyons, Bellamack, Parap**

Suited to blocks with **16m or greater frontage**

## ABOUT THE MAYO 5

### *Tropical Elevated Style*

The Mayo is a five bedroom, three bathroom home which is centred around making the most of the tropics. With louvres and bi-fold doors throughout, you would be sure to agree.

Cool, ventilated rooms are a feature, as is the extensive open space downstairs. The downstairs self contained area offers a variety of options for you to use in your home.

The Mayo is a popular option for home owners who want an elevated, distinctive home with the luxuries Killarney Homes provides.

A fantastic example of lightweight construction, this home was a National Finalist in the 2010 HIA Australian Hosing Awards for 'Most Innovative Use of Steel'.

## WHAT YOU EXPECT, YOU GET.

- **Award winning bathroom and kitchen designers** to create your personal design
- **Energy Rating - Five Star minimum Energy Ratings**
- **Fujitsu Inverter Air-conditioning Throughout**
- **Solahart Solar Hot Water System**
- **Rendered** inside and out
- **Good provision of windows for natural light and airflow**
- **Home all under full Colourbond 25 degree roof**, keeping it cool
- **Double Carport (or Garage, depending on final design)**
- **2700mm High Ceilings**
- **Tiled floor coverings throughout**
- **Energy saving downlights** throughout
- **Outstanding quality in finishes**
- **Your choice of ovens and cooktops** from a massive range
- **Work with in-house designers** to create your home with your choice of colours, paint, laminates, tiles and much more!
- **Quality Bathroom Fittings**
- **Full outdoor concrete**
- **Comprehensive fencing package supplied**
- **Comprehensive Landscaping package supplied**



## ABOUT KILLARNEY HOMES

*12-time HIA and Master Builders National Finalists 2009-2012.*

With a focus on Energy Efficient Design, Killarney Homes leads the way for tropical homes in the Top End. In the last three years alone, we have been awarded for excellence across many categories we have a wide ranging portfolio of homes, townhouses and renovations. We offer simple, clear, complete home prices, something our customers come to expect. CAL Accredited for projects up to 10 Million dollars, you can count on Killarney Homes to build your dream home.



[WWW.KILLARNEYHOMES.COM.AU](http://WWW.KILLARNEYHOMES.COM.AU)  
(08) 89 312 122