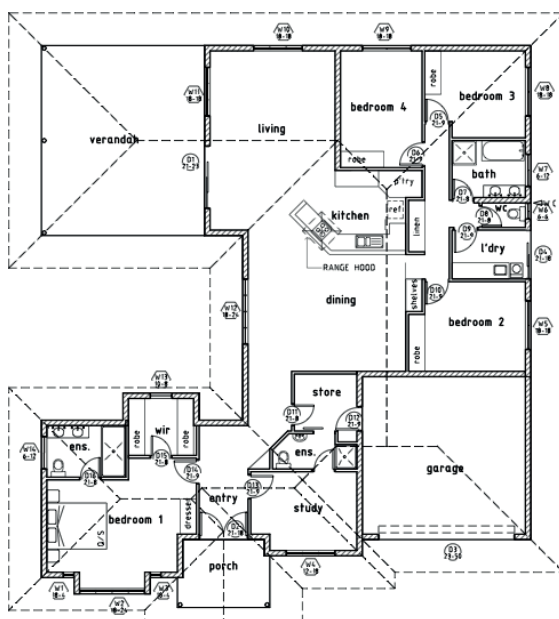


# THE CAVAN 5

\$561,200  
COMPLETE



KILLARNEY  
HOMES



GROUND FLOOR PLAN

## AT A GLANCE

Living Area: **213m<sup>2</sup>**  
Verandah: **42m<sup>2</sup>**  
Carport/Garage: **36m<sup>2</sup>**  
Width: **18m**  
Length: **20.2m**

Audited Energy Rating:



Suburbs this home has been built in: **Bellamack, Lyons**

Suited to blocks with **21m or greater frontage**

## ABOUT THE CAVAN 5

### *Our flagship home*

This 5 bedroom with study, 3 bathroom home is the layout of our Bellamack Display Home. With a breezy, shady entrance, the portico gives the home tropical style.

Energy Rated at 7.7 Stars by Accurate, this home has all the style of a modern tropical house - well designed, environmentally sound, and comfortable to live in.

Natural light, full size louvres and relaxed spaces are a feature of this excellent open and cool home. This is top of the line for family living in the tropics!

Winner of Best Display Home in 2011 and a 2012 HIA National Finalist for Energy Efficient Design.

## WHAT YOU EXPECT, YOU GET.

- **Award winning bathroom and kitchen designers** to create your personal design
- **Energy Rating - Five Star minimum Energy Ratings**
- **Fujitsu Inverter Air-conditioning Throughout**
- **Solahart Solar Hot Water System**
- **Rendered** inside and out
- **Good provision of windows for natural light and airflow**
- **Home all under full Colourbond 25 degree roof**, keeping it cool
- **Double Carport (or Garage, depending on design)**
- **2700mm High Ceilings**
- **Tiled floor coverings throughout**
- **Energy saving downlights** throughout
- **Outstanding quality in finishes**
- **Your choice of ovens and cooktops** from a massive range
- **Work with in-house designers** to create your home with your choice of colours, paint, laminates, tiles and much more!
- **Quality Bathroom Fittings**
- **Full outdoor concrete**
- **Comprehensive fencing package supplied**
- **Comprehensive Landscaping package supplied**



## ABOUT KILLARNEY HOMES

*12-time HIA and Master Builders National Finalists 2009-2012.*

With a focus on Energy Efficient Design, Killarney Homes leads the way for tropical homes in the Top End. In the last three years alone, we have been awarded for excellence across many categories we have a wide ranging portfolio of homes, townhouses and renovations. We offer simple, clear, complete home prices, something our customers come to expect. CAL Accredited for projects up to 10 Million dollars, you can count on Killarney Homes to build your dream home.



[WWW.KILLARNEYHOMES.COM.AU](http://WWW.KILLARNEYHOMES.COM.AU)  
(08) 89 312 122